

On-Site Photo 2018

Overview of features



On-Site Photo is a precision method for determining dimensions from digital images.

- ▶ Take dimensions from photos by one or two known lengths
- ▶ Correction of perspectives and lens distortions

On-Site Photo makes it possible to use the advantages of photogrammetric methods for everyone.

- ▶ Pictures of all digital cameras and scanners and PDF files
- ▶ Several pictures in one project
- ▶ Pixel-precise work with display of measuring accuracy

On-Site Photo is a universal tool for planners, surveyors, site managers and craftsmen.

On-Site Photo produces finished reports on lengths, circumferences, areas and volumes, which can be exported to MS-Excel as required.

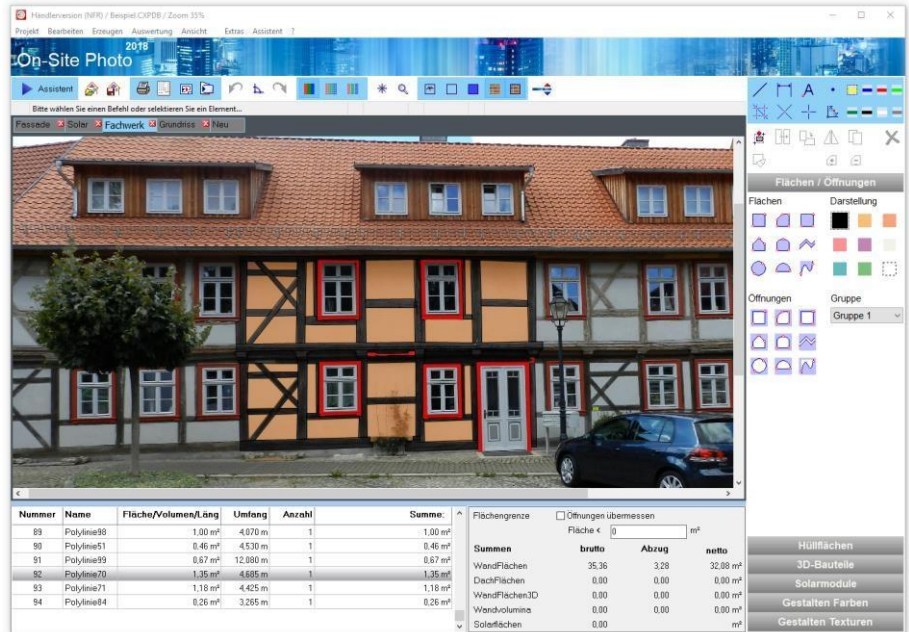
Efficient direct interfaces to Allplan and AutoCAD are available for CAD export. In addition, **On-Site Photo** offers a DXF interface and a -isb cad interface.

On-Site Photo equalizes images or image sections and saves them with selectable resolutions.

On-Site Photo assembles rectified images into high resolution result.

On-Site Photo provides convenient 2D and 3D drawing capabilities for creating:

- ▶ Presentation of view drawings and maps of damages
- ▶ Calculations of the envelope of buildings with direct interface to the *Energieberater Professional* from the company Hottgenroth
- ▶ 3D components for graphic quantity determination on scanned plans
- ▶ Planning and visualization of solar modules with extensive module library
- ▶ Automatically updated list of all items



On-Site Photo 2018

On-Site Photo features drag-and-drop styling with Brillux colors and an extensive texture library.



3D components on scanned plan

Colors are laid over the entire surface and, if necessary, transparently on image areas. Transparent colors take into account existing structures and lighting in the picture. This results in high quality visual representations.



Solar Panels

Colors are selected from the Brillux color catalog (includes RAL Classic) or Windows colors.

Textures from the texture library are displayed in the image in perspective in the correct size. In addition, any pictures can be inserted as a poster.



View with colors and textures

System requirements

- ▶ Windows 7/8/10
- ▶ Processor from 1 GHz,
- ▶ Main memory from 1 GB RAM,
- ▶ at least 1280x900 pixels,
- ▶ True Color graphics card
- ▶ 100 MB free hard disk capacity

